

TFT ADS Library Model Installation Instructions

Introduction:

The purpose of this document is to provide instructions to install TFT ADS library models along with relevant information regarding the environment used.

Environment:

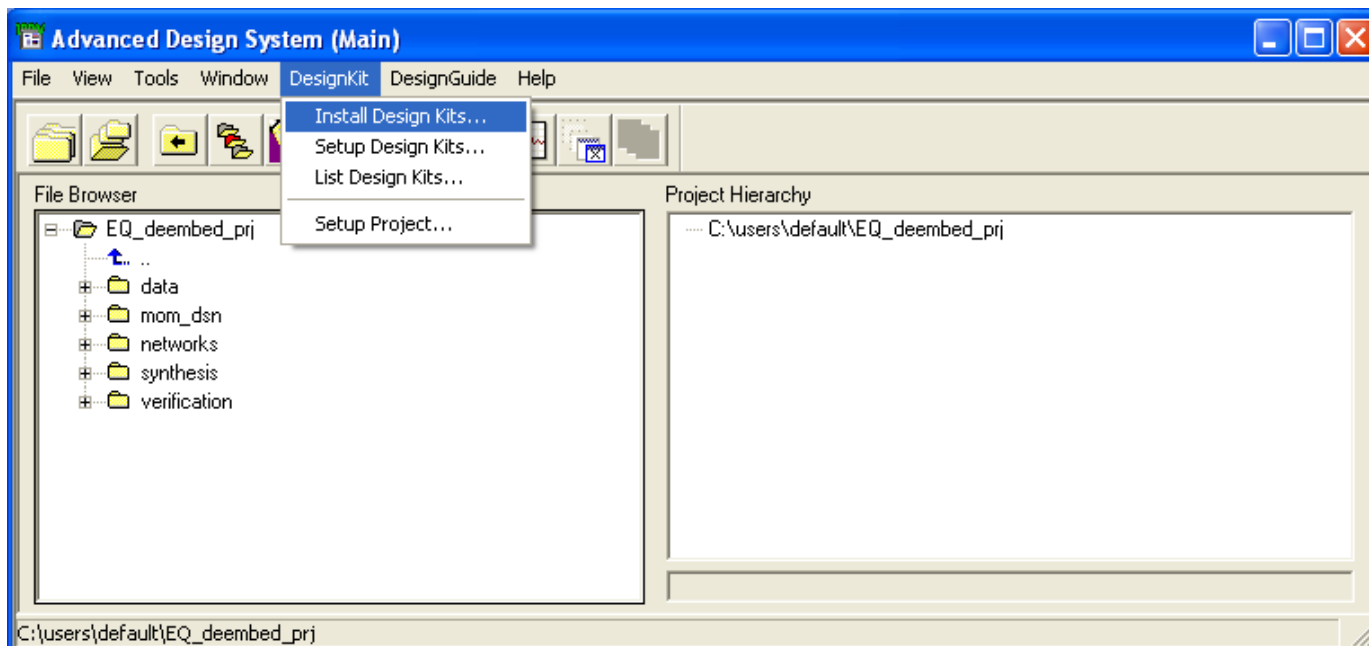
Platform : PC
Operating System : Win 2000 and Up
ADS : ADS2003A and Up

Library Download:

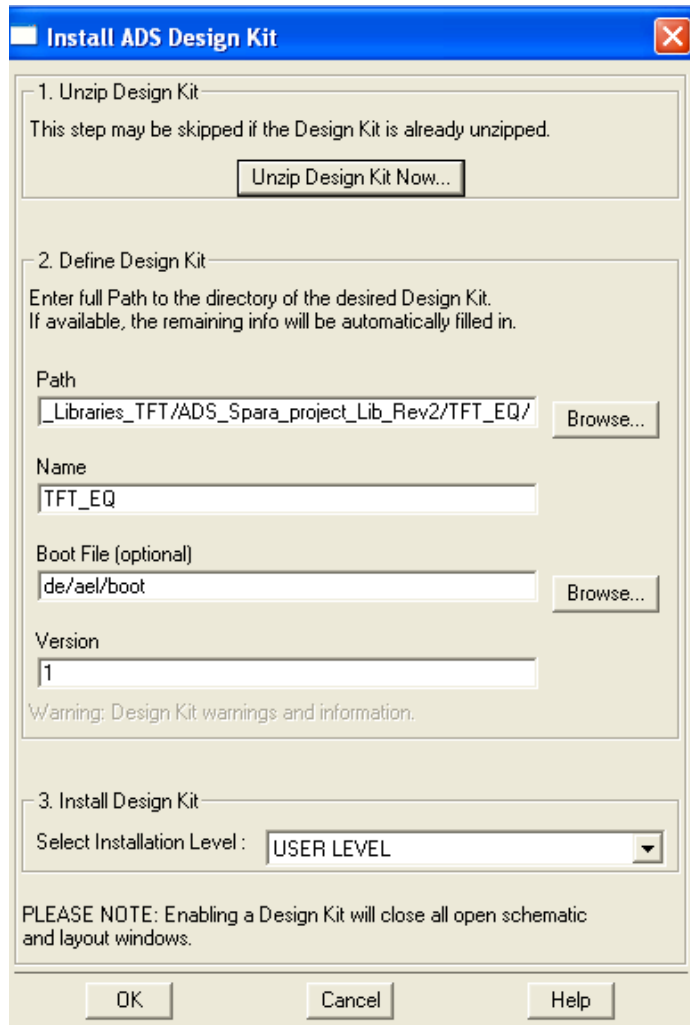
TFT library models can be downloaded from Agilent's library model website or directly from www.thin-film.com

ADS Installation Instructions:

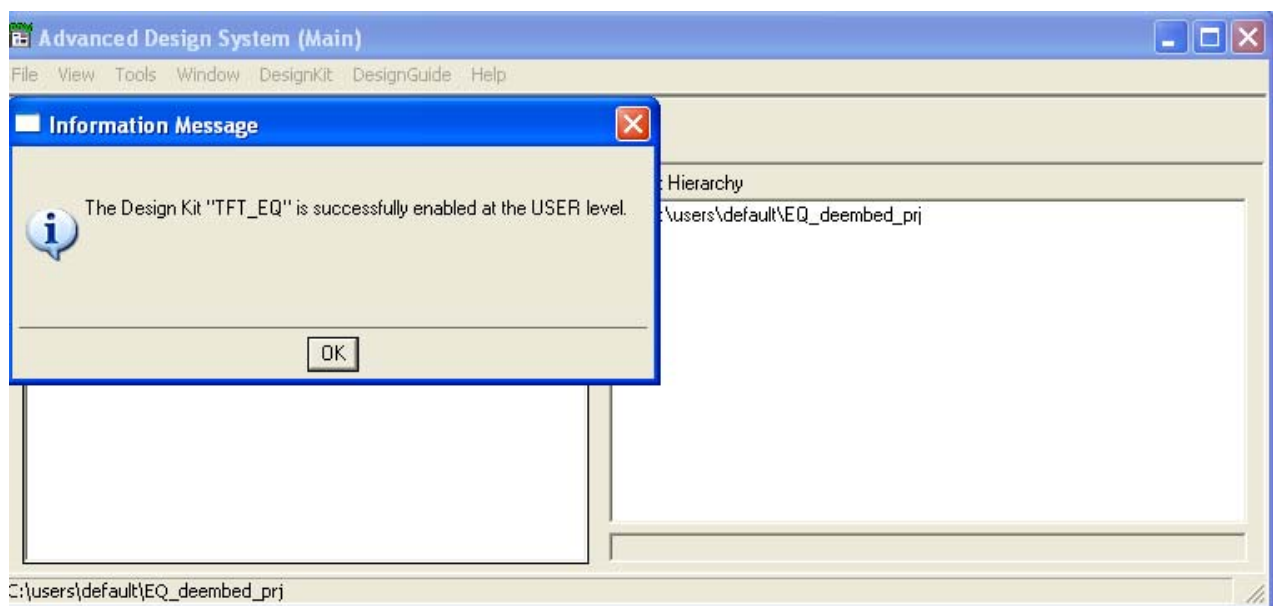
1. Start ADS.
2. Select (from main window)
Design Kit → Install Design Kits



3. Click Unzip design Kit Now and Browse to locate TFT Model Library .zip file.



4. Following Message appears once the library is successfully installed.



Instructions to use TFT library models:

1. Open Schematic window → Scroll down navigation bar on the left to locate TFT library → Drag and Drop TFT components.

